

**LAMB**  
**LONDON**  
32 S<sup>t</sup>. GEORGE St.

x Paul Hughes

## CONTINUITIES

2000 YEARS OF TEXTILES IN LATIN AMERICA

16TH MARCH - 28TH APRIL 2023

# CONTINUITIES

2000 YEARS OF TEXTILES IN LATIN AMERICA

Lamb Gallery & Paul Hughes are delighted to present 'Continuities' a group exhibition spanning 2000 years of textiles in Latin America.

Considered the first art form in the Andean region, textiles were vessels to convey identity and became paramount in reflecting social, occupational, and political status.

Andean textiles encompassed not only clothing items but also adornments used in outdoor and indoor spaces accompanying the communities' architecture. After the Spanish Conquest, many weavers continued producing garments, and due to colonial influences, new categories of textiles emerged in the region.

In this exhibition, we aim to highlight the impact of the pre-Colombian textile tradition on contemporary artistic production. Including artists like Norberto Nicola and Delba Marcolini – among many others – in conversations with Andean pieces, we shed light on the formal and conceptual influence of those pre-Colombian pieces into the work of these contemporary artists.

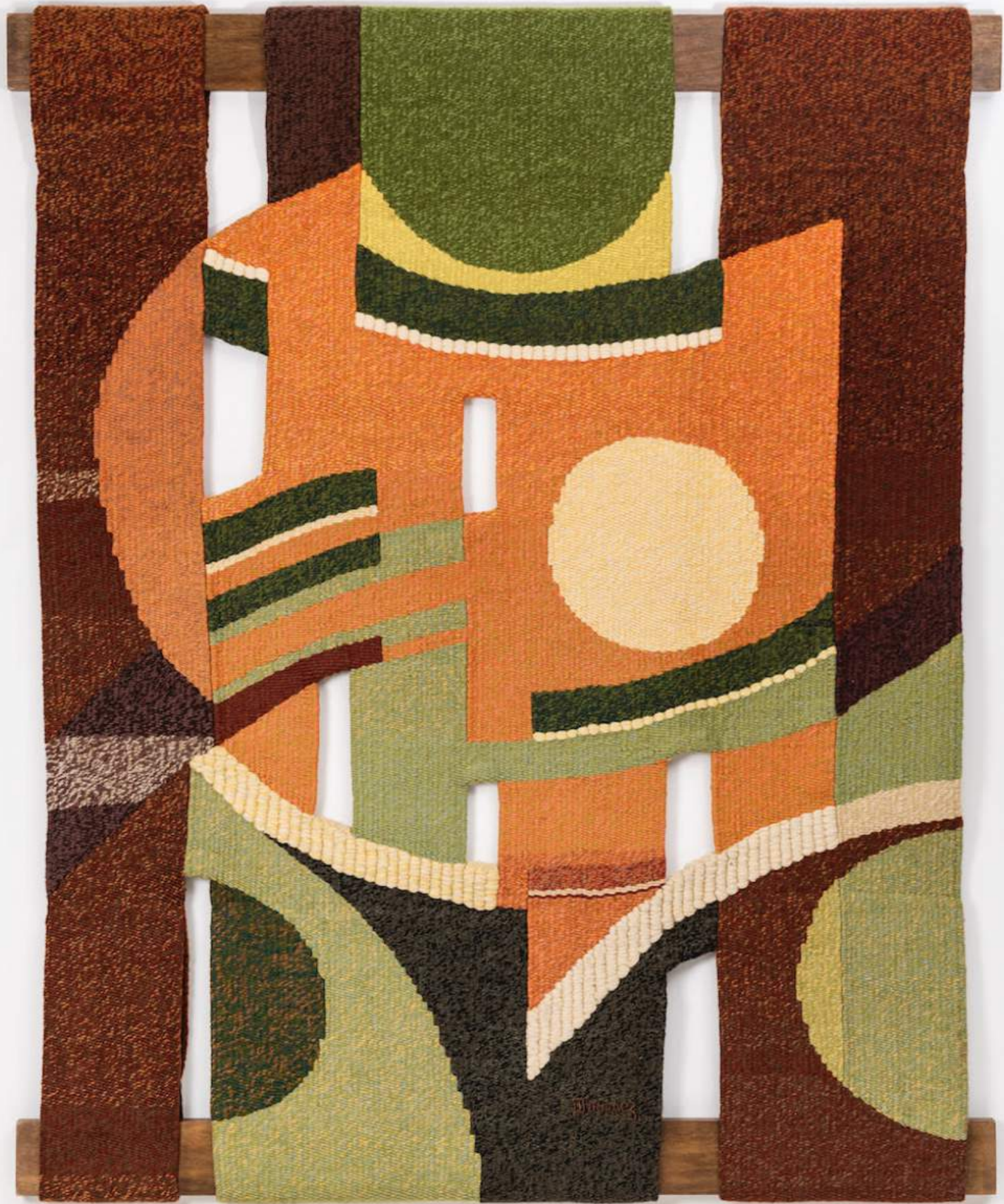


NORBERTO NICOLA

Untitled, 1959 - 1980

Tapestry with slits and strips that are passed through tubes covered with wool. From its structure, which refers to a standard, with a predominantly orange coloured background, unique woven strips with different nuances and color details erupt, placed side by side.

198 x 132 cm



JACQUES DOUCHEZ

Thétis, 1959 - 1980

Tapestry, flat with slits, geometric and abstract motifs, from the beginning of the "Formas Tecidas (Woven Forms)".

216 x 167 cm



JACQUES DOUCHEZ  
Untitled, 1959 - 1980  
Sculptural wall tapestry, made in wool in handloom, flat and leaked, executed by Atelier Douchez-Nicola (1959-1980)  
281.5 x 142 cm



NAZCA CULTURE  
Striped Tunic, Nazca/Huari Red and Yellow/Green, Circa. 200AD  
Camelid Fibres  
128 x 162 cm



NAZCA CULTURE  
Larga Nazca Tunic, Circa. 600 AD  
Camelid fibres  
85 x 206 cm



HUARI CULTURE  
Loincloth, Circa. 800AD  
Camelid fibres  
73 x 38 cm





SIHUAS CULTURE  
Long Red Panel, Circa. 100 BC - 100 AD  
Camelid Fibres  
38 x 77 cm



HUARI CULTURE  
Huari Tunic, Circa. 800AD  
Camelid Fibres  
120 x 120 cm



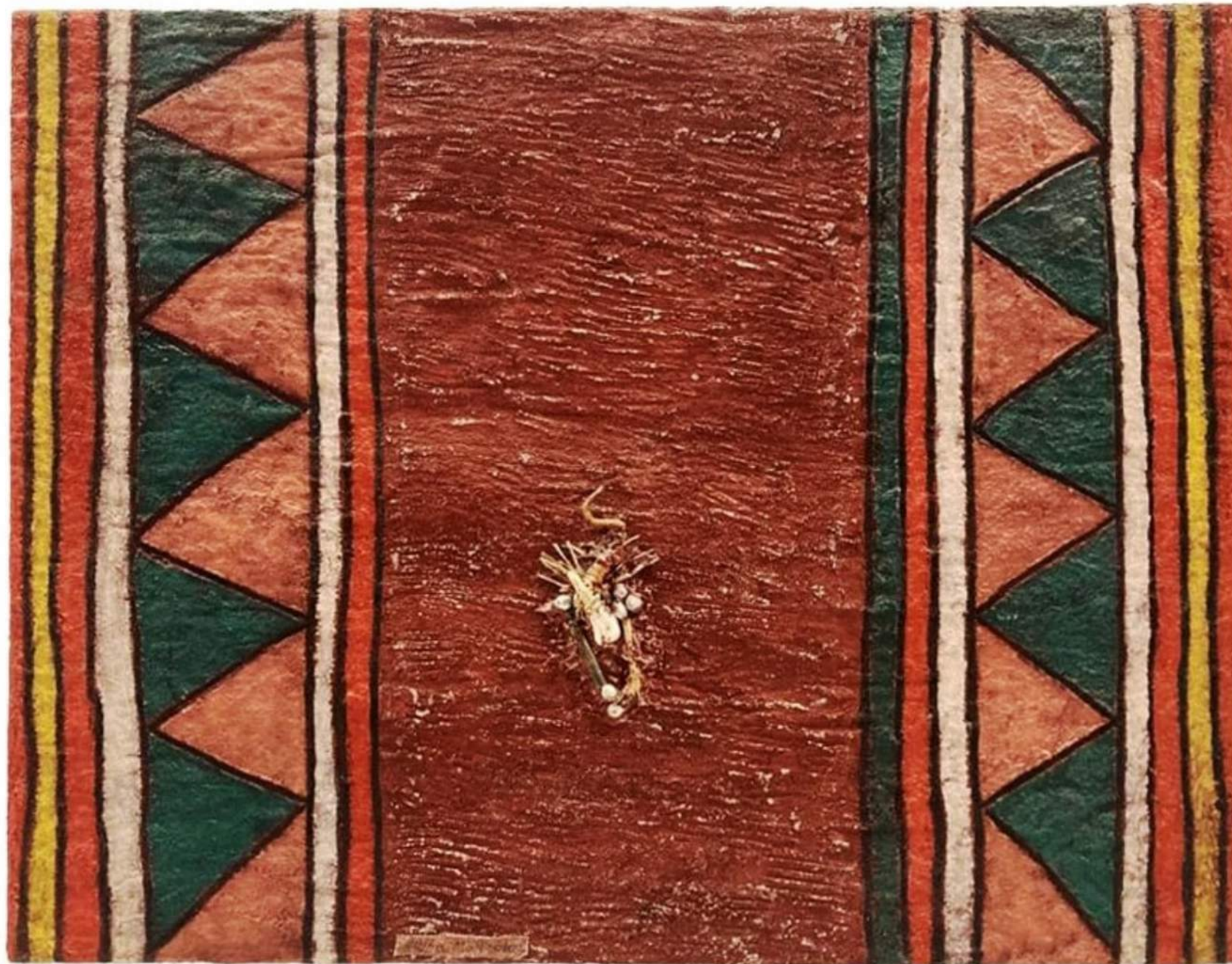
MIRA SCHENDEL  
Dress, serie "Bordados", 1975  
Batik on fabric  
75 x 165 cm



DELBA MARCOLINI  
Relevos, 1990  
Handloom weaving, agave fibers, painted cotton, sheep's wool, rustic yarns  
Andean Textiles  
80 x 108 x 10 cm



DELBA MARCOLINI  
Palmares, 1990  
Handloom weaving  
agave fibres, maize fibres  
coastal straw, beads  
Andean Textiles  
70X73x14cmt



DELBA MARCOLINI  
Kamajurá, 1990  
Mixed media and collage  
agave fibres, corn fibres  
coastal straw, jute and straw  
Andean Textiles  
65 x 50 cm

LAMB  
LONDON  
32 S<sup>t</sup>. GEORGE St.

x Paul Hughes